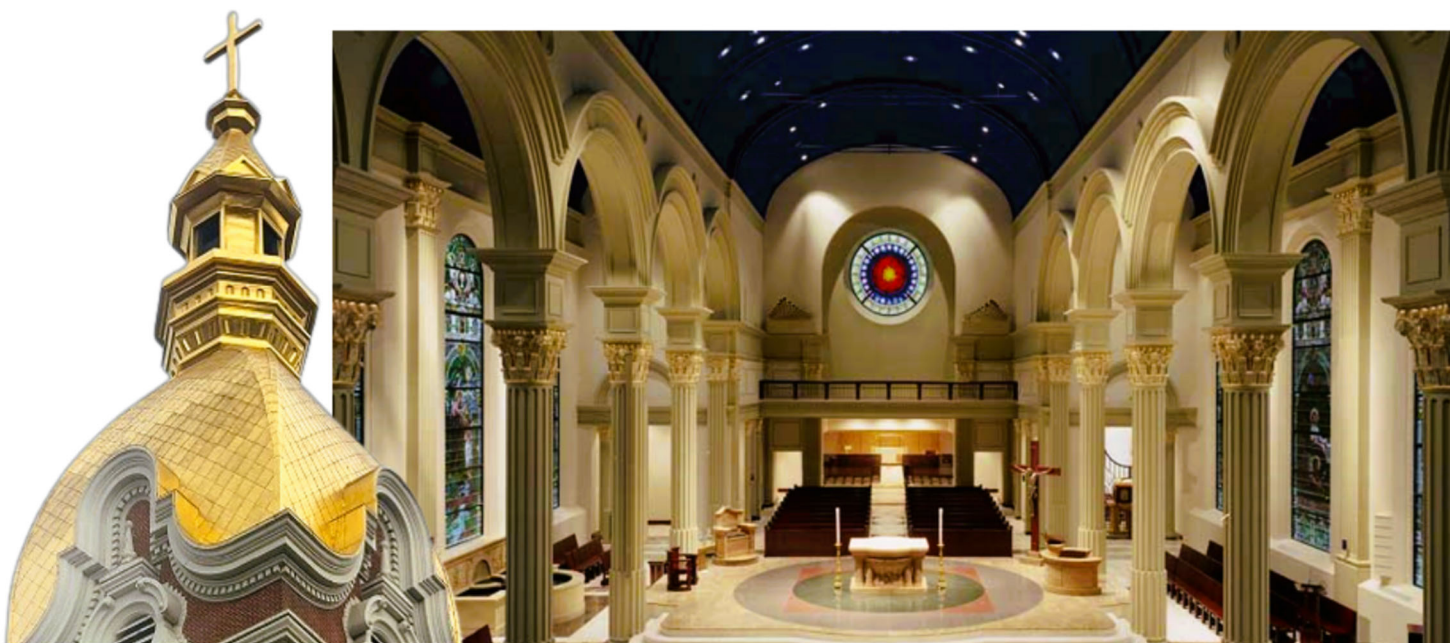




the CATHEDRAL *of the* IMMACULATE CONCEPTION



Our Mission

We, the parish family and stewards of the Cathedral of the Diocese of Kansas City-St. Joseph, invite all under the gold dome to celebrate the Eucharist, serve our guests in need, grow in the Catholic faith and proclaim the Gospel of Christ.



Welcome!

Thank you for joining us for worship today at the Cathedral of the Immaculate Conception. If you are new to the Cathedral, we invite you to visit our [website](#).

Read Our Weekly Bulletin

[News](#) about special events, worship and ways to connect with our community.

Restrooms

Restrooms are available in the vestibule, the lower level of the main cathedral and in the Bishop Hogan Center.

Hearing Assist Devices

Hearing assist devices are available in the sacristy on the south end of the Cathedral.

Ways to Give

Give online with the QR code.

Place in the offering plate. Envelopes are available in the pew racks.

Tap to give devices at the Cathedral entrances.

Thank you for your generosity.

Give Online



Service Notes

We invite your full and active participation in all the sung and spoken parts of the Mass. Hymn numbers are posted on the hymn board behind the cantor podium.

Following the Service

Please join us for coffee and donuts in the Gathering space located in the Bishop Hogan Center following the Sunday 9 a.m. and 11:00 a.m. Masses.

Our Mission

We, the parish family and stewards of the Cathedral of the Diocese of Kansas City-St. Joseph, invite all under the gold dome to celebrate the Eucharist, serve our guests in need, grow in the Catholic faith and proclaim the Gospel of Christ.



Please be advised that our Sunday 11 a.m. Mass is livestreamed to YouTube. Your participation in the service serves as your consent to the broadcast of your image and voice and to the broadcast of the image and voice of your participating minor children.



The 11 am Mass is live streamed on our YouTube Channel

<https://www.youtube.com/c/CathedraloftheImmaculateConceptionKC/featured>

THIRD SUNDAY OF EASTER MAY 4, 2025

Introductory Rites

ENTRANCE CHANT

(Please stand)

#766

You Walk along Our Shoreline



1. You walk a - long our shore-line, Where land meets un - known sea.
2. You call us, Christ, to gath - er The peo - ple of the earth.
3. We cast our net, O Je - sus; We cry the king-dom's name;



We hear your voice of pow - er, "Now come and fol - low me.
We can - not fish for on - ly Those lives we think have worth.
We work for love and jus - tice; We learn to hope through pain.



And if you still will fol - low Through storm and wave and shoal,
We spread your net of gos - pel A - cross the wa - ter's face,
You call us, Lord, to gath - er God's daugh - ters and God's sons,



Then I will make you fish - ers, But of the hu - man soul."
Our boat a com - mon shel - ter For all found by your grace.
To let your judg - ment heal us So that all may be one.

Text: Sylvia G. Dunstan, 1955–1993, © 1991, GIA Publications, Inc.
Tune: AURELIA, 7 6 7 6 D; Samuel S. Wesley, 1810–1876



SPRINKLING RITE

SPRINKLING SONG

Refrain



Music: SURGIT IN HAEC DIES, 12th C., adapt. by Leo Nestor, © 2011, GIA Publications, Inc.

GLORIA

New Mass for Congregations
Carroll Thomas Andrews (1919–2014)



Cantor or Choir:

Lord Jesus Christ, Only Begotten Son, Lord God, Lamb of God, Son of the Father, you take away the sins of the world, have mercy on us; you take away the sins of the world, receive our prayer; you are seated at the right hand of the Father, have mercy on us.





Liturgy of the Word

(Please sit)

FIRST READING

<https://bible.usccb.org/bible/readings/050425.cfm>

<https://bible.usccb.org/es/bible/lecturas/050425.cfm>

RESPONSORIAL PSALM



I will praise you, Lord, for you have res-cued me.

I will extol you, LORD, for you have
raised me up,
and have not let my enemies rejoice
over me.

O LORD, you have lifted up my soul
from the grave,
restored me to life from those who
sink into the pit. *R.*

Sing psalms to the LORD, you faithful
ones;
give thanks to his holy name.

His anger lasts a moment; his favor all
through life.
At night come tears, but dawn
brings joy. *R.*

Hear, O LORD, and have mercy on me;
be my helper, O LORD.
You have changed my mourning into
dancing.

O LORD my God, I will thank you
forever. *R.*

SECOND READING

GOSPEL ACCLAMATION (Please stand)



Al - le-lu - ia, al - le-lu - ia, al - le-lu - ia.
A - le-lu - ya, a - le-lu - ya, a - le-lu - ya.



Al - le-lu - ia, al - le-lu - ia, al - le-lu - ia.
A - le-lu - ya, a - le-lu - ya, a - le-lu - ya.

Music: *Misa Una Santa Fe*, Ronald F. Krisman, © 2010, GIA Publications, Inc.



GOSPEL
HOMILY
(Please sit)

PROFESSION OF FAITH
THE APOSTLE'S CREED
(Please stand)

I believe in God,
the Father Almighty,
Creator of heaven and earth,
and in Jesus Christ, His only Son, our Lord,
who was conceived by the Holy Spirit,

(At the words that follow, up to and including the Virgin Mary, all bow.)

born of the Virgin Mary,
suffered under Pontius Pilate,
was crucified, died and was buried;
He descended into hell;
on the third day He rose again from the dead;
He ascended into heaven,
and is seated at the right hand of God the Father Almighty;
from there He will come to judge the living and the dead.
I believe in the Holy Spirit,
the Holy Catholic Church,
the communion of Saints,
the forgiveness of sins,
the resurrection of the body,
and life everlasting.

Amen.



Liturgy of the Eucharist

(Please sit)

Offertory #770

OFFERTORY GIFTS

We are grateful for your gift which continues to enable God's ministry at the Cathedral.

Your generosity is appreciated.

Tap on the link below

[DONATE](#)

PRESENTATION OF
THE GIFTS
AND PREPARATION
OF THE ALTAR

PRAYER OVER
THE OFFERINGS

Fishermen Are Sailing Homeward



1. Fish - er - men are sail - ing home - ward In the dawn's un -
2. Ris - en Je - sus, still you meet us When our la - bor
3. Stum - bl'ing Pe - ter, who de - nied him, Meets his Lord up -
4. Ris - en Je - sus, in your mer - cy, Still you call us



cer - tain light. Nets are emp - ty, hearts dis - cour - aged
seems in vain. Still your call con - tests our fail - ures:
on the shore. "Do you love me," Je - sus asks him,
each by name, In bap - tis - mal wa - ters wash us,



From a long and fu - tile night.
"Cast your emp - ty nets a - gain!"
"You whose heart with shame is sore?"
Cleans - ing us from sin and shame.



Char - coal glows a - long the shore - line
Grant us strength to do your bid - ding,
Pe - ter pledg - es his de - vo - tion,
Still you sum - mon us to serve you,



Where a Stran - ger's form is seen. Through the morn - ing
Faith to fol - low where you lead. Then a - wake our
Vows his love is strong and deep; Then the Lord of
Ves - sels made of com - mon clay. Shape us till we



mist he calls them: "Cast your emp - ty nets a - gain."
hearts to won - der: When your gifts our hopes ex - ceed!
Love re - stores him: "Be my shep - herd; feed my sheep!"
bear your im - age In the tasks of each new day!



EUCCHARISTIC PRAYER

(Please stand)

Holy, Holy, Holy

Ho - ly, Ho - ly, Ho - ly

Lord God of hosts. Heav - en and earth are

full of your glo - ry. Ho - san - na, ho - san - na, ho -

san - na in the high - est. Bless - ed is he who

comes in the name of the Lord. Ho - san - na, ho -

san - na, ho - san - na in the high - est. Ho - san - na, ho -

san - na, ho - san - na in the high - est.

Text: ICEL, © 2010
Music: *Mass for the City*, Richard Proulx, © 1991, 2010, GIA Publications, Inc.

Please kneel

MYSTERY OF FAITH

When We Eat This Bread

When we eat this Bread and drink this Cup, we pro-

claim your Death, O Lord, un - til you come a - gain.

Text: ICEL, © 2010
Music: *Mass for the City*, Richard Proulx, © 1991, 2010, GIA Publications, Inc.



DOXOLOGY AND AMEN

AMEN



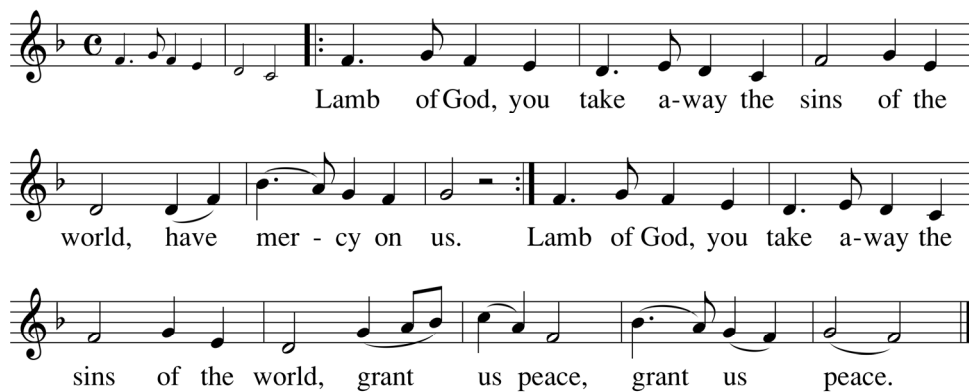
Music: *Mass for the City*, Richard Proulx, © 1995, GIA Publications, Inc.

Please Stand

LORD'S PRAYER

SIGN OF PEACE

LAMB OF GOD



Music: Richard Proulx, © 1975, GIA Publications, Inc.

Please kneel



COMMUNION

#512

At the Lamb's High Feast We Sing



1. At the Lamb's high feast we sing Praise to our vic -
 2. Where the Pas - chal blood is poured, Death's dark an - gel
 3. Might - y vic - tim from on high, Hell's fierce pow'rs be -
 4. East - er tri - umph, East - er joy, This a - lone can



to - rious King, Who has washed us in the tide
 sheathes his sword; Is - rael's hosts tri - umph - ant go
 neath you lie; You have con - quered in the fight,
 sin de - stroy; From sin's pow'r, Lord, set us free,



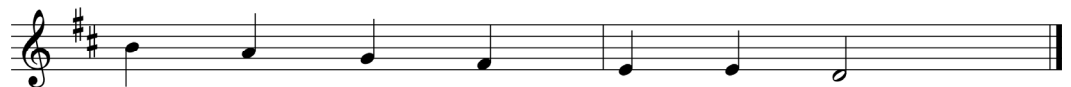
Flow - ing from his pierc - ed side. Praise we him, whose
 Through the wave that drowns the foe. Praise we Christ, whose
 You have brought us life and light. Now no more can
 New - born souls in you to be. Fa - ther, who the



love di - vine Gives his sa - cred Blood for wine,
 blood was shed, Pas - chal vic - tim, Pas - chal bread;
 death ap - pall, Now no more the grave en - thrall;
 crown shall give, Sav - ior, by whose death we live,



Gives his Bod - y for the feast:
 With sin - cer - i - ty and love
 You have o - pened par - a - dise,
 Spir - it, guide through all our days:



Christ the vic - tim, Christ the priest.
 Eat we man - na from a - bove.
 And in you your saints shall rise.
 Three in One, your name we praise.

PRAYER AFTER COMMUNION

Text: *Ad regias agni dapes*; Latin, 4th C.; tr. by Robert Campbell, 1814–1868, alt.
 Tune: SALZBURG, 77 77 D; Jakob Hintze, 1622–1702; harm. by J. S. Bach, 1685–1750



Concluding Rites

ANNOUNCEMENTS

SOLEMN BLESSING

DISMISSAL

Deacon: Go in peace

All reply: Thanks be to God.

RECESSIONAL

Instrumental



CATHEDRAL MASS SCHEDULE

Weekdays: MONDAY - FRIDAY 12:15 p.m.

Weekend

SATURDAY 2:30 p.m.

SUNDAY 9 a.m. | 11 a.m. | 8 p.m.

CONFESSION SCHEDULE

SATURDAY 1:30 - 2:15 p.m.

TUESDAY 11:30 - 12:00 p.m.

THURSDAY 11:30 - 12:00 p.m.

CATHEDRAL LOCATION

11th & Broadway | Kansas City, MO 64105

OFFICE ADDRESS

416 West 12th Street | Kansas City, MO 64105

CONTACT

816-842-0416 x110 and info@kcgolddome.org